

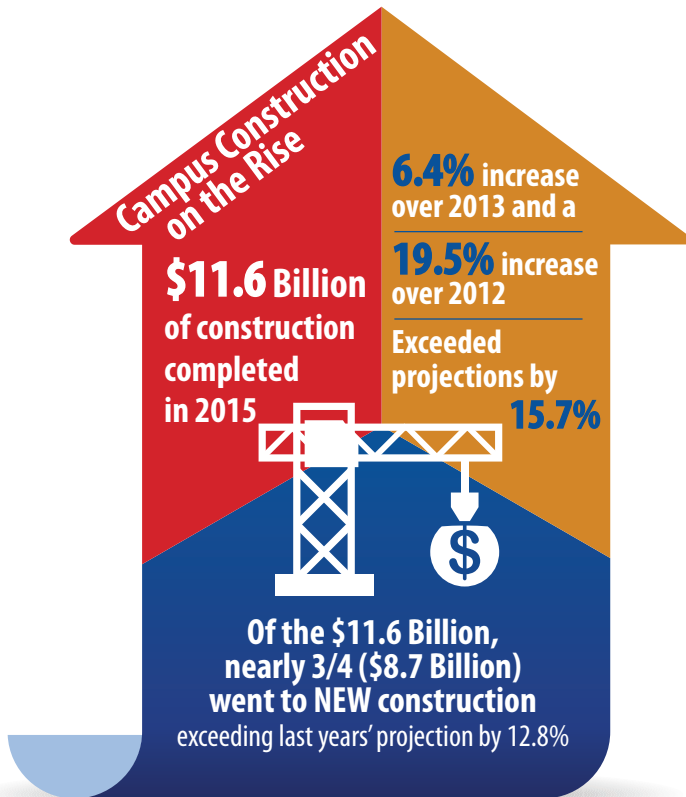
Streamlining Campus **Construction** and Management

Modern Solutions that Help Teams Keep Up with Growing Demand

With the growing demand for renovations of old, inefficient buildings—as well as new campus construction—struggling school facilities managers are relying on solutions from **Autodesk** to help them assess, plan, prioritize and better manage the ongoing use and renovation of campus facilities.

Learn about recent campus construction trends and Autodesk solutions below.

Campus Construction on the Rise

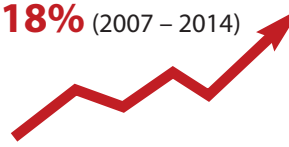


2015 Campus Renovations

- \$1.5B** Total renovation projects
- 46.7%** HVAC systems upgrades
- 42.9%** Electrical upgrades
- 33%** Involve lighting, plumbing & flooring

Growing Backlogs

Public campuses' **backlogs** have **grown** at a **rate of 18%** (2007 – 2014)



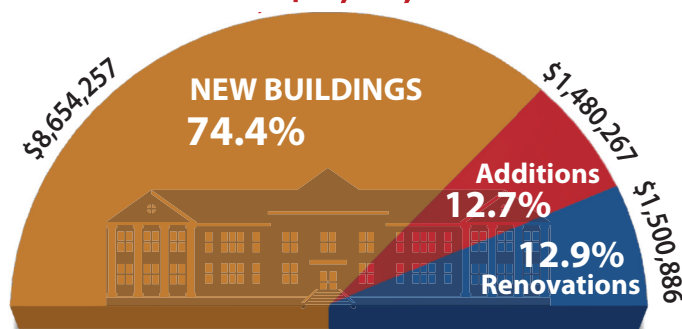
Autodesk Solutions

Driving Better, Faster Decision Making

Today's campus managers need to capture and share up-to-date building information—in the right format—to effectively budget and execute facilities projects. Autodesk delivers the tools teams need to collaborate better and build smarter.

2015 Total Campus Construction Spending

TOTAL \$11,635,410



"Getting the right details into the models gave us a very powerful tool to improve decision making and plan renovations."

—Joe Porostosky, Director, Facilities Information and Technology Services, Ohio State University



Autodesk portfolio of software enables:

- Accurate facilities data collection
- Better decision-making
- Greater cost control
- Increased energy efficiency
- Improved building optimization